

# Survey Control Mark Report

## ADMINISTRATIVE DETAILS

Mark Number	<b>10132</b>		
Alternate Names	<b>GREENMOUNT WEST</b>	Town	<b>GREENMOUNT</b>
	<b>SBM132</b>	Local Authority	<b>TOOWOOMBA REGIONAL</b>
Locality Description	<b>HODGSON STREET SHIRE OFFICE</b>		
Related Information	<b>new ref vide IS331460.</b>		
Mark Type	<b>STAND</b>		
Installed By	<b>CAMBOOYA</b>	Last Visited	<b>07-Jul-2025</b>
Installed Date	<b>01-Oct-1943</b>	Sketch Available	<b>Yes</b>
Mark Condition	<b>GOOD</b>	Num Connections	<b>13</b>

## GDA2020 COORDINATES

Lineage	<b>Derived</b>		
Latitude	<b>27° 47' 19.80070" S</b>	MGA2020 Easting	<b>391945.940m</b>
Longitude	<b>151° 54' 11.49559" E</b>	MGA2020 Northing	<b>6925707.050m</b>
Hz Posn Uncertainty	<b>2.500m</b>	MGA2020 Zone	<b>56</b>
Ellipsoidal Height		MGA2020 Point Scale	<b>0.99974411</b>
Vrt Posn Uncertainty		MGA2020 Grid Conv	<b>-0° 30' 41"</b>
Published	<b>27-Aug-2025</b>	Fixed By	<b>CADASTRAL SURVEY</b>
Adjustment	<b>SCDB UPGRADE BY DNRME IMAGERY</b>		

## GDA94 TRANSFORMED COORDINATES

Latitude	<b>27° 47' 19.84629" S</b>	MGA94 Easting	<b>391945.350m</b>
Longitude	<b>151° 54' 11.47357" E</b>	MGA94 Northing	<b>6925705.642m</b>
Ellipsoidal Height		MGA94 Zone	<b>56</b>

## AHD HEIGHT

Lineage			
Height		Vertical Uncertainty	
Published		Fixed By	
Origin Mark Source		NLN Section	

## SURVEY CONNECTIONS

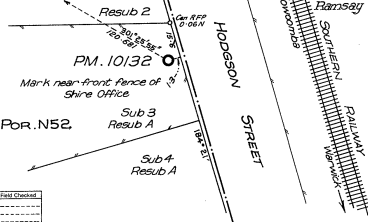
<b>IS331460</b>	07-Jul-2025	<b>SP127013</b>	31-Jan-2000
<b>SP222421</b>	13-May-2010	<b>RP216429</b>	02-Oct-1987
<b>IS229412</b>	23-Apr-2010	<b>RP205970</b>	22-Apr-1986
<b>SP229500</b>	02-Nov-2009	<b>RP102263</b>	01-Oct-1943
<b>SP222436</b>	17-Dec-2008		
<b>SP222413</b>	17-Oct-2008		
<b>SP202819</b>	13-Mar-2007		
<b>SP180987</b>	04-Jul-2005		
<b>SP179071</b>	20-May-2005		

The Survey Co-ordination Act of 1952-1981  
(Regulation 16)  
FORM 6

QUEENSLAND

REGD. No. 10132

## PERMANENT MARK SKETCH PLAN

Other Ref. No. 5 BM 132Description of Mark BENCH MARK TYPE No. 4 D.M.S. District ToowoombaParish of Hodgson City or Town of Greenmount WestLocal Authority Cambooya Shire Council Map TownMeasurements are in metres (Noc necessarily to scale)  
Bearings are as meridians of plensRedrawn Form 6Parish of Hodgson  
Stn. 2 on RP 163957

Field Checked

Installed by Cambooya Shire Council Date October 1943  
Placed in Connection with Level survey Plan and/or File 47/132  
(Type of survey/project) Field Bk. Ref.

Connd. on Cadastral Plan No. RP 102263, RP 163957

AUSTRALIAN HEIGHT DATUM (This section to be completed by D.M.S. when Official Un-adj. Values are available)  
Adj. Height                      Analysis Ref.                      L. Book No.                       
Origin Secn.                      Secn. Nos.                      Book No.                     

OTHER DATUMS (Relevant information column to be completed in full)  
Reduced Level (1) 504.362 A.H.D. (der.) (1) A.H.D. Datum Adopted (1) 6130e L. Book No. (1) CL 132  
Levelled by (1) Cambooya Shire Council Date (1) Oct '43  
Origin Mark (1) Rly Bridge No. 32 at chainage 25 MI. 12 Ch. Origin R.L. (1) 519.020

A.M.G. CO-ORDINATES E                      N                      Zone                      Date                       
Origin Stns. for Co-ordinates with values adopted (1) E (1) N  
Local Co-ords. available on Plan Ref.                      Estab. by                     

10132



\*SCS010132\*

I certify that the permanent mark shown in this sketch has been placed on the ground

in accordance with the regulations under "The Survey Co-ordination Act of 1952-1981".

Date 26th May 1986 Signature [Signature]Authority Chief Magistrate Surveying